



# TBF THOMPSON GROUP

Home of Trucks, Lorry-Mounted Cranes, Quarry Equipment and Construction Plant



**GARVAGH**  
**MALLUSK PLANT**  
**MALLUSK DAF**  
**PORTADOWN**  
**DUBLIN**

+44 (0) 28 2955 8353  
+44 (0) 28 9084 8371  
+44 (0) 28 9034 2001  
+44 (0) 28 3839 3300  
+353 (0) 1401 9300



info@tbftthompson.com  
www.tbftthompson.com

# TBF Thompson Group

Home of Trucks, Lorry-Mounted Cranes, Quarry Equipment and Construction Plant

## Contents



### COMPANY INFO

|                            |     |
|----------------------------|-----|
| Foreword                   | 3   |
| TBF Construction Machinery | 4   |
| History                    | 5-6 |

### COMMERCIAL VEHICLES

|                            |   |
|----------------------------|---|
| DAF Truck Sales            | 7 |
| Commercial Vehicle Service | 8 |
| Commercial Vehicle Parts   | 9 |

### PLANT & CRANE

|                              |    |
|------------------------------|----|
| Contractors Plant            | 10 |
| Quarry & Road Building       | 11 |
| Bell Articulated Dump Trucks | 12 |
| McCloskey International      | 13 |
| Palfinger Cranes             | 14 |
| Cummins Engine               | 15 |
| Doosan Portable Power        | 16 |
| Plant & Crane Servicing      | 17 |
| Plant Parts                  | 18 |
| Undercarriage                | 19 |
| Danline Brushes              | 20 |

# TBF Thompson Group

Home of Trucks, Lorry-Mounted Cranes, Quarry Equipment and Construction Plant

## Foreword



### What We Do

Haulage, excavation, compaction, demolition, generator and truck-mounted cranes, our company caters to a huge array of industries, distributing first-class products from world-leading marques. As well as the sale of commercial vehicles, plant, generators and lorry-mounted cranes, TBF Thompson also provides superb parts, service and breakdown support.



### Our Commitment to Excellence

Today, Doctor TBF Thompson's legacy of quality and excellence still stands strong. As a company, we take great pride in continuing to invest in the business's greatest asset, our people. From comprehensive training to superb equipment and facilities, we know our sales, parts and service teams can adapt to meet customers' ever-changing needs.

### Who We Are

Since its establishment in 1958 by Doctor TBF Thompson, TBF Thompson (Garvagh) Ltd has been at the forefront of commercial and plant sales in Northern Ireland. Operating from four depots in strategically placed locations, our dedication to customers throughout the country is second to none.

Raymond Crilly joined the company in 1999 as part of the buy-out team in the role of Financial Director. In 2016, on the retirement of Andy Magowan, Raymond led a further buy-out and now leads the company as Managing Director.

#### *Raymond Crilly, Managing Director*



#### *Alan Espie, Director*

Alan is a business studies graduate who joined the Company in Sept 1997. He commenced his career with TBF Thompson selling LDV vans and moved into truck sales in November 1999. Over the past 18 years Alan has been a key figure in developing the DAF truck business within N.I.

Dedicated to commercial vehicle excellence and passionate about the trucks we supply, Alan is an expert in his field and is highly regarded both by DAF Trucks and customers alike.



#### *Seamus Doherty, Director*

With a keen interest in plant and machinery, Seamus commenced his career with TBF Thompson in 1995, joining the Plant Sales division in 2007. Highly focused and passionate about the products he sells, Seamus has established a good rapport with customers and is respected by both manufacturers and colleagues alike.

Since becoming a Director in May 2016, Seamus has continued to further the company's interests demonstrating his drive and commitment both to the business and to our customers.

# TBF Thompson Group

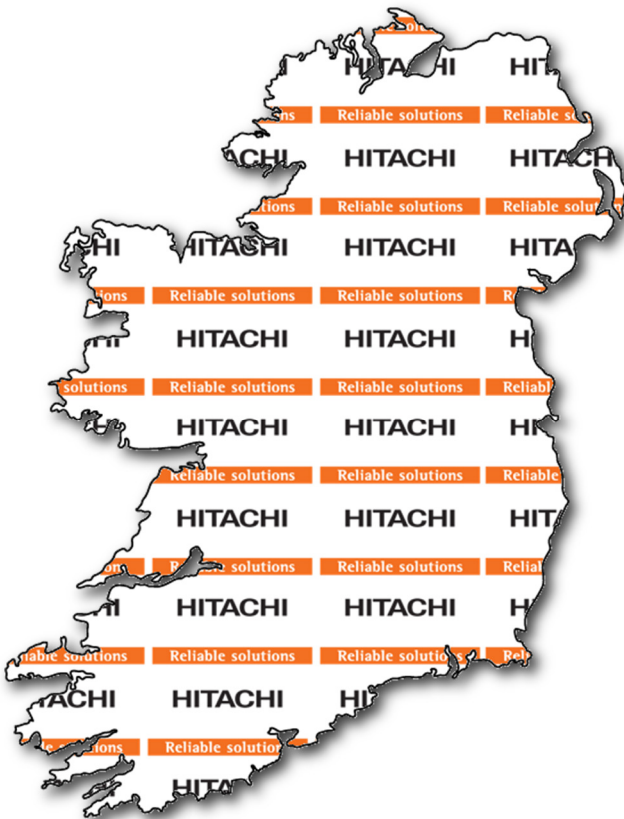
Home of Trucks, Lorry-Mounted Cranes, Quarry Equipment and Construction Plant

## The Brand to choose First



### Who We Are

Established in 2018 and subsidiary of TBF Thompson Group, TBF Construction Machinery is the official Hitachi dealer for the Republic of Ireland. We are also an authorized dealer of Bell Equipment, Thwaites, McCloskey International, Cummins and Montabert, offering a range of services for diesel engines and hydraulic rock breakers. Our staff are dedicated to bringing first class service to customers all over the country from our depot in Park West, Dublin.



### What We Do

We have many years' experience with world-class brands and are committed to ensuring every owner gets the most from their machine. Our services include:

- Sales for Hitachi, Bell dump trucks, McCloskey International, Cummins Engine, Doosan Portable Power and Montabert Breaker products
- Genuine Parts
- Undercarriage
- Diagnostics & Repairs
- Fully Equipped Service Vans
- Fleetguard Stockist
- Valvoline products also available



**TBF Construction Machinery**  
34a Lavery Avenue, Park West Industrial  
Park, Nangor Road, Dublin, D12 TD91

T : +353 (0) 1401 9300

# TBF Thompson Group

Home of Trucks, Lorry-Mounted Cranes, Quarry Equipment and Construction Plant

## History

He left school at 15, started a haulage business, and built it into the biggest plant and truck dealership in the country. The name is Thompson, TBF Thompson and the company TBF Thompson (Garvagh) Ltd.

Born above his parents' grocery shop in 1915, Thomas Bacon French Thompson was partly named in tribute to the terrible toll in the trenches on the Western Front in World War One.

When his father bought a Model T Ford, the first car in Garvagh, young Tom was driving it around the deserted side roads by the time he was 12. At 15 he joined the family business to serve behind the counter, at 18 he persuaded his father to buy a lorry to replace the horse and cart on the grocery round, and within a few years had built up such a thriving trade that a bigger lorry was needed, a 1.5 ton Bedford.

Before long he bought a three-ton Bedford for a milk contract, then hauled potatoes to Belfast and brought back loads of feeding stuffs and fertiliser or lime, buying yet another lorry as the business grew. During World War II he and his friend P J Pattison Nutt leased several quarries from which they hauled stone to the airfields under construction at Nutt's Corner and Millisle.

In November 1946, he bought 70 ex-Army lorries at a war surplus sale at Toome, lining them up along Garvagh's Main Street ready for rebuilds to civilian specification. The good folk of Garvagh thought another World War had started.

In 1947 the partnership bought the Strabane Service Station, acquiring with it a young employee called R J (Bertie) Gillanders. It was the beginning of a lifetime's successful business partnership.

By the early 1950's the Thompson Motor Company had acquired a Hillman car franchise, together with Commer and Karrier commercial vehicles. The two-stroke Commer TS3 proved a best seller and Mr Thompson built the first extension to his premises.

Strabane Service Station was sold in 1953 and Bertie Gillanders moved to Garvagh where he and TBF worked long hours – the business was open late on Tuesday and Thursday evenings. Northern Ireland's road network was being improved and new housing was under construction, but tippers were hard to come by. So the hard working Bertie would seek out and buy lorries in England, bring them home, shorten their chassis and turn them into tippers.

Indeed the business grew so quickly that in 1958 Mr Thompson was advised to turn the Thompson Motor Company into a limited company. But the name was already registered to a firm in England, so the nearest choice was TBF Thompson (Garvagh) Ltd.

In 1961 he bought the business of Leyland distributor J A Potter on Ravenhill Road in Belfast, changing its name to TBF Thompson (Belfast) Ltd. Within two years he held a show of his Leyland, Albion, Scammell and Ford Commercial franchises, and sold over £250,000 worth of vehicles in one week – a vast turnover for those days, comparable with £60 million today.

As early as 1963 two-way radios were fitted to service and other key vehicles, covering most of the province. With good product and service to match, the company won a major share of the market.

Garvagh was equally busy, and in 1966 Prime Minister Terence O'Neill opened extended workshops and offices.

Shortly afterwards TBF Thompson (Belfast) Ltd was sold to the long-established firm of Charles Hurst. The founder had another project in mind, following a call from another entrepreneur called J C Bamford of excavator fame.

But some still perceived Garvagh as being too far in the country, so Mr Thompson bought premises on the Shore Road, Belfast, to give better service to his scores of JCB customers in Belfast, Co Down and Co Armagh. The Bamford family including the founder's son, young Tony, now Sir Anthony attended the opening in 1969 by Prime Minister James Chichester-Clark. Before long JCB was market leader in Northern Ireland. Mr Thompson giving a record order worth £2 million to JCB. But the Garvagh Empire still had a long way to go.



# TBF Thompson Group

Home of Trucks, Lorry-Mounted Cranes, Quarry Equipment and Construction Plant

## History *continued*

In June 1971 TBF diversified by purchasing quarrying and road construction company R J Maxwell & Son Ltd (now known as Northstone (NI) Ltd), followed in a few months by Maxwell's sister company W M Bolton & Sons Ltd – a civil engineering firm based in Kilrea. Tommy Leighton joined the organisation to manage these companies and then in 1973 Kenneth Cheevers joined as contracts director.



In 1975 TBF Thompson (Properties) Ltd was formed and with the purchase of around 200 acres at Mountsandel in Coleraine, TBF was in the property development business. Other land acquisitions followed.

1977 saw the largest acquisition to date – Farrans Ltd – the long established civil engineering firm that had constructed airfields, power stations, reservoirs, factories and housing complexes all over the United Kingdom. With Farrans came its subsidiaries – Ready Use Concrete, Scotts of Toomebridge, sand suppliers and manufacturer of roof tiles, J T Glover quarry owners of Moneymore and Carmean Limeworks also of Moneymore, Strangford Ltd of Dunmurry and Dublin, plant and machinery dealers selling Kue Ken crushers, Thwaites dumpers and Priestman excavators.

1978 saw a significant change with the group being sold to Cement Roadstone Holdings, the Dublin based aggregates multinational. The group continued to be managed by TBF, Bertie Gillanders and Kenneth Cheevers until 1985 when they retired to concentrate their efforts on Charles Hurst - the Belfast motor group which they had purchased personally in 1984.

1980 saw a major problem arising with JCB – they were unhappy with TBF selling Priestman excavators and told us to stop – Tom Thompson was not willing to be bullied so there was a parting of the ways. A journalist at that time wrote "JCB without TBF Thompson in Northern Ireland is similar to an Ulster Fry without bacon and eggs".

From 1985 the Group was managed by Ernie McClure who was assisted by John Brown, Denis McClure, Ralph Clarke, Sid Millar (of rugby fame), Ronnie McIntyre and Andy Magowan who headed up the plant and engineering division.

The plant and engineering division expanded in the period 1985 to 1999 selling a wide range of equipment to the construction and quarry industries. They were market leaders with many of the items they sold. Notable milestones were – Hino franchise in 1987, Bitelli paver franchise in 1988, acquisition of the Blackwood Hodge business in Belfast in 1990, Hitachi franchise in 1991 and the DAF franchise in 1995 with the purchase of commercial vehicle dealer GMS. In 1997 an extension trebled the size of the plant business at Mallusk which had been purchased from Blackwood Hodge. From this location many Terex dump trucks, Yale forklifts, Phoenix road building equipment were sold.

In 1999 another significant milestone was reached – the plant and machinery division was sold by CRH to a management buy-out team of Andy Magowan, Raymond Crilly and Mark McCluskey. This included the premises at Garvagh, plant depot at Mallusk, commercial vehicle business at Mallusk and the plant depot in Dublin.



In May 2001 the DAF premises at Mallusk were extended and refurbished which has continued with constant investment in the latest technology in the repair of commercial vehicles. DAF has been market leader in the UK for the past 16 years.

2004 saw the relocation of our plant business to a purpose built building at Rathcoole, Co Dublin. Full advantage was taken of the Celtic tiger years but unfortunately the operation there closed in 2010 because of the economic downturn.

Also in 2004 they extended their commercial vehicle back-up service to customers in the west of the province by building new premises at Portadown. These premises were doubled in size in 2007 because of demand.

In 2008 Thompson's were awarded the Montabert franchise, the market leader in hydraulic breakers.

It was with great sadness that the death of Dr TBF Thompson was announced on 1 January 2009 at the age of 93. He left behind a great legacy in the form of a company which still bears his name as well as a charitable trust and a lifetime of fond memories for colleagues.

The Recession years of 2008 – 2013 hit the commercial and construction industries hard. Thanks to astute leadership and staff dedication, the company stood firm and fought back against the downturn acquiring the Palfinger franchise in 2010 and Cummins Power Generators in 2016.

With the company going from strength to strength, Andy retired as Managing Director, handing the reins over of TBF Thompson to a management buy-out team. Raymond Crilly took over as Managing Director together with Alan Espie and Seamus Doherty as fellow directors. With years' of experience between them, each director is an expert in his field and committed to keeping TBF Thompson the home of trucks, lorry-mounted cranes, quarry equipment and construction plant in Ireland.

# TBF Thompson Group

Home of Trucks, Lorry-Mounted Cranes, Quarry Equipment and Construction Plant

## DAF Truck Sales



### Driving Quality in Northern Ireland

TBF Thompson has served the truck and transport industry for over 70 years. While the days of refurbishing ex-army trucks is long gone, our dedication to quality has never faltered, which is why we are proud to represent DAF in Northern Ireland.

Renowned for reliability and excellent build quality, DAF is the UK's market leading truck brand, with over 11,000 registrations in 2015. Showcasing the best in European craftsmanship, each truck is designed and manufactured at headquarters in Eindhoven (Netherlands) with cab and axles built in Westerlo, (Belgium) before being constructed at the assembly plant in Leyland (UK). Our fully equipped depots at Garvagh, Portadown and Mallusk are just 3 of 133 DAF sales and service centres located throughout the UK, making it the largest dealer network over the widest geographic coverage.

Driven by the DAF Transport Efficiency philosophy, the award-winning Euro 6 range of trucks offer sophisticated transport solutions with market-leading reliability and low operational costs, providing the highest return per kilometer.



#### XF

Flagship of the Euro 6 Range and winner of several fleet and transport awards, the DAF XF sets the benchmark in long distance road haulage. Striking the perfect balance between performance and efficiency, state-of-the-art technologies like the Paccar MX engine give operators the power they need at running costs they will love. Drivers will be happy too with the generous legroom and convenient stowage of the Super Space cab.



#### CF

City hopping or rural ranging, the DAF CF is unrivalled in its versatility. Available in three cab variants, three engine sizes, numerous chassis and axle combinations, including construction, the CF can be tailored to any transport need. Designed to perform and built to last, the CF features state-of-the-art technologies, like the DAF Driver Performance Assistance software, to give operators miles of productivity and efficiency.



#### LF

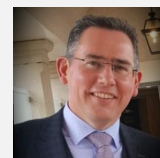
Lightweight and agile, the DAF LF is the ideal urban transporter. Available in four or six cylinders, its lively PX engine is specially tailored for lots of stops and starts. A stiff chassis and front steering angle of 90° allow drivers to manoeuvre tricky spaces with confidence and ease. The new 2016 edition has even more performance-driven, fuel saving features than previous models making it the most efficient LF ever.



**Brain Lynch**  
Area Sales Manager  
T: 07774 631 626  
E: brianl@tbftthompson.com



**Liam O'Neill**  
Area Sales Manager  
T: 07976 512 698  
E: liamon@tbftthompson.com



**Gerard O'Dea**  
Area Sales Manager  
T: 07860 959 928  
E: gerardod@tbftthompson.com

**Alan Espie**  
Director

T: 07860 110 597  
E: alane@tbftthompson.com



# TBF Thompson Group

Home of Trucks, Lorry-Mounted Cranes, Quarry Equipment and Construction Plant

## Commercial Servicing

### Servicing You Can Trust

Since the 1950s, TBF Thompson has faithfully served the maintenance needs of NI businesses. Our expertly trained technicians work tirelessly from three strategic locations across Northern Ireland to keep customers on the road all year round. Investing in state-of-the-art diagnostic and repair equipment, our workshops are fully equipped to handle a variety of commercial vehicles such as tippers, buses and concrete mixers.

We offer customers a large range of services for any commercial vehicle:

- Tachograph calibration (digital & analogue)
- Brake testing
- PSV and MOT preparation (over 96% first time pass rate)
- Full fleet maintenance packages
- Full Repair & Maintenance and Preventative Maintenance contracts for O-License compliance
- Fixed price repair and maintenance contracts
- Vehicle accident repair including bodywork and ancillary equipment



### DAF Check

This is free electronic document management system used by our workshops to store accurate DAF vehicle records. Approved by VOSA, DAF Check records all inspections, servicing and defects, building a history that can be accessed by both the technician and customer, reducing paperwork. Customers are emailed the results of any inspections and can also access the system 24/7 to add their own notes. Linked to DAFAid, DAF Check proves especially valuable in recording and highlighting defects, aiding breakdown recovery at the roadside.

### DAF Aid

Independently verified as the best in the business, DAFAid is an industry leading roadside recovery system. Operating 24/7 all year round, TBF Thompson has three dedicated DAF Aid vans on the roads at any one time patrolling the country. Repairing 80% of breakdowns at the roadside and an average response time of 1hr, with just one free phone call, we can have you on the road and back to work.



 **DAFAid** **0800 919 395**

#### GARVAGH

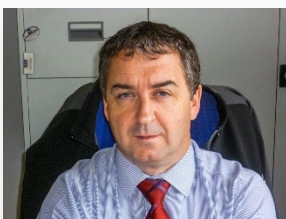
Mon - Fri 0800 - 1700  
Saturday 0800 - 1230  
Sunday Closed

#### MALLUSK

Mon 0800 - 1800  
Tues - Fri 0800 - 2300  
Saturday 0800 - 1600  
Sunday Closed

#### PORTADOWN

Mon - Fri 0800 - 1700  
Saturday 0800 - 1200  
Sunday Closed



**John Purdy**  
Group After Sales Director  
T: 028 9084 6826  
E: [johnp@tbftthompson.com](mailto:johnp@tbftthompson.com)

# TBF Thompson Group

Home of Trucks, Lorry-Mounted Cranes, Quarry Equipment and Construction Plant

## Commercial Parts



### Quality Parts at Competitive Prices

At TBF Thompson, we pride ourselves on meeting the needs of all our commercial customers by offering a huge range of replacement parts. From depots at Garvagh, Mallusk and Portadown, we stock thousands of high quality products at competitive prices, ready for sale.

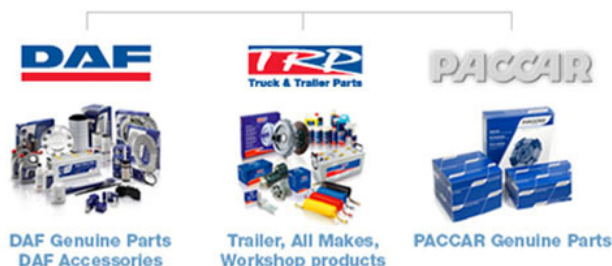
We don't just cater to truck drivers. Every day we source and supply replacement parts to bus companies, van drivers, haulage/ storage businesses and even Land Rover owners.

### Availability

Our goal is to get customers back out on the road as soon as possible so part availability is essential to a quick and efficient service. We invest in sophisticated warehouse technology across all our depots to accurately locate and track stock levels, ensuring the part you need is always on hand. This system works so well that our average first time pick rate is over 95%.



### PACCAR PARTS



### TRP All Makes

You don't have to drive a DAF to avail of our competitive prices. We are also agents for TRP All Makes, a programme specially developed by DAF to offer customers more choice when it comes to replacement parts. Operators with mixed marque fleets can come to any of our depots and purchase high quality parts for all their vehicles including Volvo, Mercedes, ERF and Scania.

### Get Discounts & Exclusive Offers with DAF MAX

As well as competitive pricing, we offer customers even more savings with the fantastic DAF MAX card. Simply signing up for this free card entitles users to money off vouchers for many DAF and TRP parts and accessories as well as exclusive offers. Just one of the many ways we support businesses all over Northern Ireland.



#### GARVAGH

Mon - Fri 0800 - 1700  
Saturday 0830 - 1200  
Sunday Closed

#### MALLUSK

Mon - Fri 0800 - 1800  
Tue - Fri 0800 - 2300  
Saturday 0800 - 1600  
Sunday Closed

#### PORTADOWN

Mon - Fri 0800 - 1800  
Saturday 0800 - 1200  
Sunday Closed



**Wesley Thompson**  
DAF Trucks Parts Manager,  
Mallusk  
T: 028 9084 6825  
E: wesleyt@tbftompson.com



**Kieran Tully**  
DAF Trucks Parts Manager,  
Garvagh  
T: 028 2955 6240  
E: kieran@tbftompson.com



**Raymond Derby**  
DAF Trucks Parts Manager,  
Portadown  
T: 028 3839 9415  
E: raymondd@tbftompson.com

# TBF Thompson Group

Home of Trucks, Lorry-Mounted Cranes, Quarry Equipment and Construction Plant

## Contractors Plant



### HITACHI

#### Reliable solutions

As the UK's No. 1 supplier of excavators, Hitachi is committed to excellence and their superb track excavators are some of the best in the business. Ranging from an agile 1 tonne to an enormous 800 and everything in between, Hitachi have 35 expertly engineered models tailored to any need. Performance boosting, fuel saving technologies are built in throughout the range, giving operators much more than excellent excavation.



A world-class name in mechanical compaction, Bomag has over 22 product groups dedicated to surface treatment. Their range of hardwearing, reliable tampers, vibratory plates and light tandem rollers is particularly popular and widely used across the construction industry. Designed to perform and built to last, Bomag is a brand that is dedicated to excellent results on any site.



### Thwaites

Renowned for quality and reliability, Thwaites have been designing dumpers for over 60 years. Made from high grade steel and using only the most durable components, each machine has been carefully crafted to give operators unbeatable earthmoving solutions. Ranging from an agile 300Kg to a mighty 10 tonne, most models have the option of Front Tip, Power Swivel or Hi Tip skip function.



Based in Lyon, France, Montabert has been producing first-class drilling and demolition equipment since 1921. Years of expert design and manufacture have led Montabert to gain worldwide recognition for their huge range of outstanding equipment. Attachments such as the V-series breaker, grapples, drifters and pulverisers give operators powerful tools to achieve tough tasks on construction sites.



**Seamus Doherty**  
Director  
T: 07860 110 591  
E: seamusd@tbftthompson.com



**Ian Campbell**  
Plant Sales Executive  
T: 07860 110 589  
E: iancampbell@tbftthompson.com



**Mickey Conway**  
Plant Sales Executive  
T: 0867 758 258  
E: michaelc@tbftthompson.com

# TBF Thompson Group

Home of Trucks, Lorry-Mounted Cranes, Quarry Equipment and Construction Plant

## Quarry & Road Building



Earth, asphalt or stubborn stone, Bomag have a huge range of expertly engineered machines to tackle any surface. Used on projects all over the world, thousands of miles of roadways bear the Bomag signature of precision. From pavers and planers to heavy rollers and compactors, each machine has been built using the best materials and trusted technology to ensure perfect results every time.

## HITACHI

### Reliable solutions

With almost 60 years' experience designing first-class earthmoving machinery, Hitachi is a name trusted the world over. Dedicated to power, precision and productivity, the company provides professional quarry and road building equipment. Whether it is tracked excavators, rigid dumpers, loading shovels or wheel loaders, every model in the Hitachi range offers maximum performance at minimal running cost with eco-friendly technologies built in to reduce environmental impact.



Renowned for strength and reliability, Montabert's range of heavy breakers, drills and pneumatic equipment is used on mining and demolition projects all over the globe. Designed to endure the toughest conditions, each model is built to give operators years of steadfast service while retaining a high resale value. Patented mechanisms such as the BRV system, adjust operating speeds, improving performance and safety on site.



Operating since 1891, Phoenix Engineering is the UK's largest and oldest manufacturer of road construction and maintenance plant equipment. Producing asphalt hotboxes, chipping spreaders, bitumen distributors and trailer mounted batching plant, the company offers expert equipment for any surface laying job. Designed to perform and built to last, Phoenix products give years of reliable results.



**Seamus Doherty**  
Director  
T: 07860 110 591  
E: seamusd@tbftthompson.com



**Ian Campbell**  
Plant Sales Executive  
T: 07860 110 589  
E: iancampbell@tbftthompson.com



**Mickey Conway**  
Plant Sales Executive  
T: 0867 758 258  
E: michaelc@tbftthompson.com

# TBF Thompson Group

Home of Trucks, Lorry-Mounted Cranes, Quarry Equipment and Construction Plant

## BELL Equipment



### Think BIG – Think BELL

Established in 1954, Bell machines have been moving billions of tonnes of earth across the world for over 60 years. Now part of the TBF Thompson group of franchises, we are proud to bring Bell Dump Trucks to the whole of Ireland, including the B20E, B30E and B45E models.



*“Bell Equipment is seen as one of the world’s leading construction machinery manufacturers, with its ability to supply a strong reliable product and develop an ADT range that’s widely regarded as a benchmark in plant vehicle expertise... We believe that these articulated dump trucks will compliment many of the existing franchises we hold and are delighted to add Bell Equipment to the list of prestigious machine manufacturing names we supply. It’s a positive decision for both companies and we feel confident that moving forward, Bell and TBF Thompson will be a winning combination.”* TBF Thompson Director, Seamus Doherty

### Strong, Reliable Support

As an authorized dealer for all of Ireland, we offer a range of services from our depots in Dublin, Garvagh and Mallusk:

- Qualified Engineers
- Genuine Bell Parts
- Diagnostic & Repairs
- Fully Equipped Service Vans



# BELL

**Seamus Doherty**  
Director  
T: 07860 110 591  
E: [seamusd@tbftompson.com](mailto:seamusd@tbftompson.com)

# TBF Thompson Group

Home of Trucks, Lorry-Mounted Cranes, Quarry Equipment and Construction Plant

## McCloskey International



### Growing Green with McCloskey International

Established over 30 years ago in Canada, McCloskey International has taken the crushing and screening industry by storm. Research, testing and listening closely to customers has resulted in a range of expertly engineered machines used the world over. Producing machines in Coalisland, Co. Tyrone, and market leader throughout Ireland, customers can be assured that the McCloskey™ brand is one of quality.



### A Range of Machines for Every Job

From quarrying to recycling, McCloskey International have a quality product to meet your needs:

- Shredders
- Crushers
- Screeners
- Trommels
- Stackers
- Feeders
- Material Handlers
- Washing Systems

### Dedicated Support

Working with quarry and heavy plant for over 50 years, we understand the importance of swift, knowledgeable assistance.

No matter where you are in Ireland, our teams at Garvagh and Dublin are available on site or over the phone to provide support including first-class sales advice, genuine parts, and mobile engineers.



**McCloskey**  
INTERNATIONAL

**Seamus Doherty**  
Director  
T: 07860 110 591  
E: [seamusd@tbftthompson.com](mailto:seamusd@tbftthompson.com)

# TBF Thompson Group

Home of Trucks, Lorry-Mounted Cranes, Quarry Equipment and Construction Plant

## Palfinger Cranes



### Reach Your Potential

Perfecting the crane since 1932, Palfinger is the world's largest manufacturer of truck mounted cranes. Creating lifting solutions for every industry, the company has a huge range of equipment available such as transportation forklifts, forestry and recycling cranes, tail lifts and hook loaders.

**Palfinger Loader Cranes** PALFINGER's main product is the hydraulic knuckle boom crane, renowned for its user friendliness and high efficiency. Ranging from a tidy 0.7mt to a giant 150.7mt, Palfinger has close to 150 loader models and owns over 30% of the world market share.

### Designed for Safety, Built for Life

Decades of pioneering research and technology have resulted in the excellent features benefitting Palfinger customers today.

#### Paltronic 50 controlled

#### Safety

With the PALTRONIC 50 and PALTRONIC 150, Palfinger offers the latest control electronics for the series production crane. The most important safety and comfort functions include:

- Overload cut-off
- Stability control (HPSC)
- High Power Lifting System (HPLS)
- Active Oscillation Suppression system (AOS)
- Dual Power System plus (DPS plus) in the fly jib insert

#### KTL protected

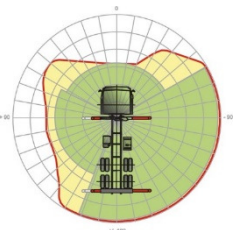
#### Durability

Ensuring a long-lasting surface protection, the components of every Palfinger crane have been cleaned, primed and painted using their renowned KTL coating.

#### RRC Radio Remote Control operated

#### Ease of Use

RRCs are equipped with linear or cross levers and provide the greatest possible comfort to the operator.



### Peace of Mind with Superior After-Care at TBF Thompson

The Palfinger franchise is supported by the TBF Thompson brand of superior after sale service and back-up.

Both our Plant depots at Garvagh and Mallusk have many years professional experience repairing and inspecting Palfinger products. We stock genuine replacement parts on site to reduce downtime as well as operating a van-based delivery service to get parts straight to your door.

**With TBF Thompson and Palfinger, you are in safe hands.**



**Liam O'Neill**  
Area Sales Manager  
T: 07976 512698  
E: liamon@tbftompson.com



**Mark Bennett**  
Group Plant Service Manager  
T: 07880 504688  
E: markb@tbftompson.com

# TBF Thompson Group

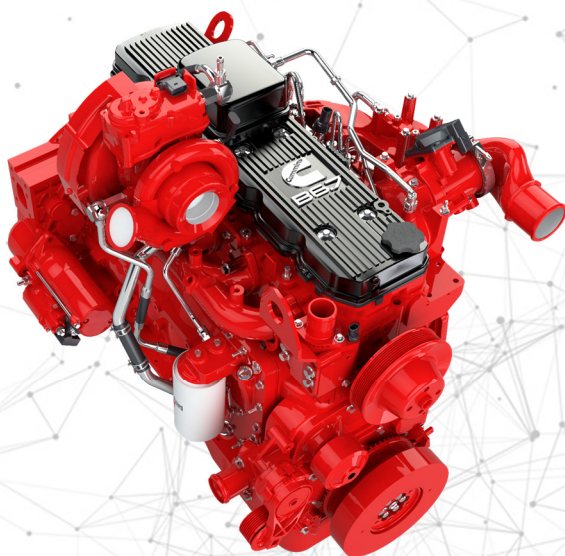
Home of Trucks, Lorry-Mounted Cranes, Quarry Equipment and Construction Plant

## Cummins Engines



### Power Your Business with Cummins Diesel Engines

Cummins is the world's largest independent manufacturer of diesel engines, building over a million engines a year. Founded in 1919, the company has incorporated a century of expertise into their products and countless machines across the globe bear their name.



### A Range of Engines to Suit Your Needs

Construction, agriculture, automotive, bus, mining – we provide sales and parts for a wide range of diesel engines including the B3.3 small industrial, QSB6.7 CM850 mid-range (pictured) and QSX15 CM570 heavy duty.

### Genuine Parts, Servicing and Sales

We know how important product support is, which is why we offer a range of first-class Cummins services from our depots in Dublin, Garvagh and Mallusk:

- Qualified Engineers
- Cummins Genuine Parts
- Diagnostics & Repairs
- High Performance Engines
- Fully Equipped Service Vans
- Fleetguard Stockist
- Valvoline products available



#### Dublin

34a Lavery Avenue, Park West Industrial Park, Nangor Road, Dublin, D12 TD91

T : +353 (0) 1401 9300

#### Garvagh

6-10 Killyvalley Road, Garvagh, Coleraine, BT51 5JZ

T : +44 (0) 28 2955 6230

#### Mallusk

10 Michelin Road, Hydepark Industrial Estate, Mallusk, BT36 4BX

T : +44 (0) 28 9083 4505

# TBF Thompson Group

Home of Trucks, Lorry-Mounted Cranes, Quarry Equipment and Construction Plant

## Doosan Portable Power



### Doosan Portable Power– Focused on YOUR Success

Renowned the world over, Doosan Portable Power have been manufacturing products for over 100 years. Their comprehensive range of air compressors, generators, and pneumatic tools are available from our Dublin, Mallusk and Garvagh plant depots.



### Products to Suit YOUR Needs

**AIR COMPRESSORS** - Available from 2 m<sup>3</sup>/min to 44 m<sup>3</sup>/min at 7 to 35 bar. These compressors have the most options available in the industry so you can customize your equipment to fit your needs.

**GENERATORS** - including heavy-duty air and fuel filters plus up to 50°C ambient temperature capability

**PNEUMATIC TOOLS** - Paving breakers, jack hammers, hammer drills and more. Doosan's line of rugged and reliable construction tools will give your business a competitive edge.

### Unbeatable Support

Just like Doosan, TBF Thompson has been involved in the plant industry for many years. We pride ourselves on excellent customer service, offering expert sales, parts, repairs and advice from three dedicated plant depots.



## Portable Power



Seamus Doherty  
Director  
T: 07860 110 591  
E: seamusd@tbftthompson.com

# TBF Thompson Group

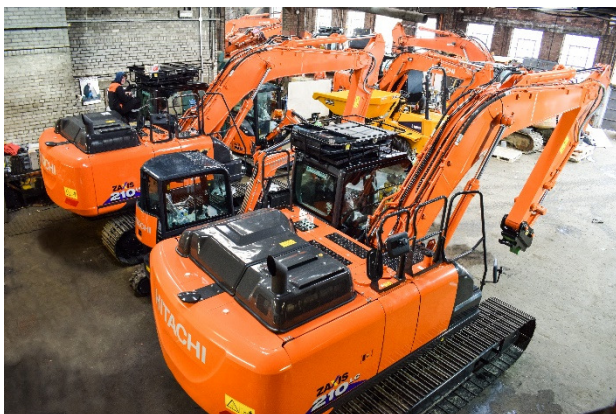
Home of Trucks, Lorry-Mounted Cranes, Quarry Equipment and Construction Plant

## Plant & Crane Service



### Peace of Mind Servicing and Support

We have been looking after the needs of our plant and quarry machinery customers since 1966. Inspecting and repairing a huge range of makes and models, our engineers are highly trained to offer the best possible service. Every day, our workshops attend to a mix of machines, large and small, including pavers, dumpers, breakers and excavators.



#### Any Make, Any Model

Our engineers can repair a huge variety of machinery such as cranes, backhoe loaders, excavators, dump trucks, forklifts, industrial engines, pavers etc.

#### Service Contracts

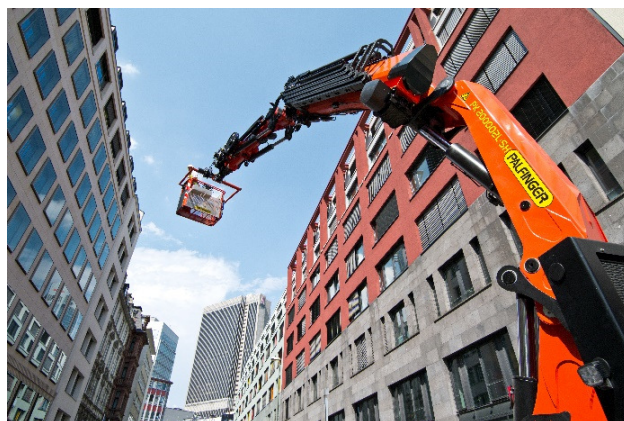
We want customers to get the most out of their machinery, which is why we offer superb service packages for new Hitachi owners. Specially tailored to their own needs, customers have a choice between Repair & Maintenance and Periodic Service contracts, prolonging the life of their machine.

#### Brake Testing

No matter the make or model, we offer full brake testing for any construction and quarry machine. Our workshops at Garvagh and Mallusk are equipped with state-of-the-art tools to accurately inspect and repair

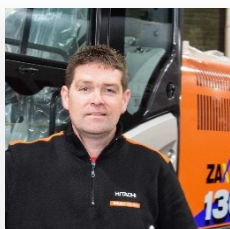
#### Lift Testing

Through the thorough examination of lifting equipment, our expert engineers can provide certification to LOLER and PUWER specifications necessary for the operation of all cranes and tail lifts. We offer this testing at both our Mallusk and Garvagh depots.



#### On-Site Support

If your machine breaks down outside opening hours or it isn't possible to visit our workshops, we offer convenient on-site servicing and repair. Using vans equipped with modern tools and devices, our engineers travel all over Northern Ireland attending to a large range of construction and quarry machinery.



**Mark Bennett**  
Group Plant Service Manager  
T: 07880 504688  
E: markb@tbftompson.com

# TBF Thompson Group

Home of Trucks, Lorry-Mounted Cranes, Quarry Equipment and Construction Plant

## Plant Parts

### World-Class Brands at Competitive Prices



Long supporting the plant and machinery industry, at TBF Thompson, we pride ourselves on providing all the parts and accessories our customers need to go about their day. From dedicated depots in Garvagh and Mallusk, our staff work hard, stocking and supplying thousands of genuine products from world-leading brands like Bomag, Hitachi and Thwaites.



### Engines

Whether its track machines or tractors, mixers or mowers, keep the heart of your machine ticking over with our genuine parts and engines. Yanmar, Kohler, Cummins, Hatz... whatever make or model, we are sure to have the perfect part to keep every engine running smoothly.

### Batteries

Found in mowers, motorcycles, tractors and trucks, Yuasa batteries power multiple machines around the world. Its efficient, performance-driven design makes it a trusted choice for thousands of people and a brand TBF Thompson are pleased to provide.



### KAB Seating (formerly Bostrum)

Fitted to buses, tractors, diggers, trucks and more, if you sit on it we sell it. Providing seats of any shape, size and finish, KAB has a huge selection of specially tailored products, including seating for offices and mobility chairs.

### Oils, Lubricants & Antifreeze

Whatever engine is under the hood, we are sure to have the right solution with our superb selection of high quality oils and lubricants. Stocking branded products from Maxol and Global Oil, customers can buy items in a variety of container sizes, or in bulk.

### We Also Deliver!

Our depots operate an in-house van delivery system, transporting goods to customers all over Northern Ireland and Donegal. For destinations further afield, our staff work closely with reliable couriers to ship orders to any country.



**Global oil**  
Manufacturers of Top Quality Lubricants



#### Dublin

34a Lavery Avenue, Park West Industrial Park, Nangor Road, Dublin, D12 TD91

T : +353 (0) 1401 9300

#### Garvagh

6-10 Killyvalley Road, Garvagh, Coleraine, BT51 5JZ

T : +44 (0) 28 2955 6230

#### Mallusk

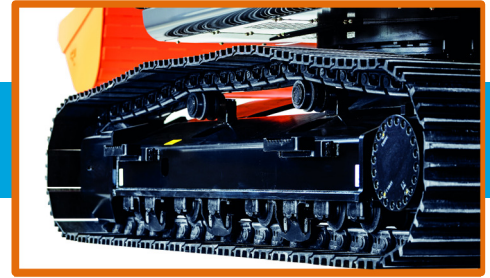
10 Michelin Road, Hyde Park Industrial Estate, Mallusk, BT36 4BX

T : +44 (0) 28 9083 4505

# TBF Thompson Group

Home of Trucks, Lorry-Mounted Cranes, Quarry Equipment and Construction Plant

## Undercarriage



### Any Machine, Any Track, We Have It Covered

Dedicated to excellence, our specialist staff have been sourcing, fitting and overhauling high quality undercarriages for over 20 years. Official dealers of VermaTrack and Camso, as well as suppliers for BYG, we provide world-class products at competitive prices. Steel or rubber, big or small, at TBF Thompson, we fit it all.



#### Parts

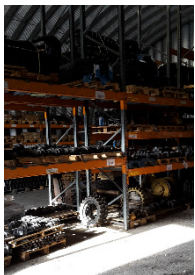
To ensure you get a keen price, we keep a large stock of parts for all popular machines at both Garvagh and Mallusk including:

- Chains
- Rollers
- Idlers
- Sprockets
- Track shoes
- Adaptors
- Pins and locks for CAT and ESCO type systems
- Track groups



#### Track Press

We operate a WTC 250 ton track press which can handle a huge range of track sizes up to D10. Mechanised for speed and efficiency, this press is just one of many expert tools we use to ensure the best service.



#### Warranty

All tracks come with warranty included: 12 months for steel and 18 months for rubber. We also offer delivery throughout Ireland.

#### Servicing

Our fully equipped workshops at Garvagh, Dublin and Mallusk provide first-class repair and maintenance services for all types of tracked machinery.



We also offer free, no obligation track inspections and advice.



#### Dublin

34a Lavery Avenue, Park West Industrial Park, Nangor Road, Dublin, D12 TD91

T : +353 (0) 1401 9300

#### Garvagh

6-10 Killyvalley Road, Garvagh, Coleraine, BT51 5JZ

T : +44 (0) 28 2955 6230

#### Mallusk

10 Michelin Road, HydePark Industrial Estate, Mallusk, BT36 4BX

T : +44 (0) 28 9083 4505

# TBF Thompson Group

Home of Trucks, Lorry-Mounted Cranes, Quarry Equipment and Construction Plant

## Danline Brushes



### First Class Sweeping Solutions

It's hard work keeping the streets clean which is why TBF Thompson stocks high quality sweeping products you can rely on. Proud provider of Danline Brushes for many years, our Garvagh depot can source and supply the tools you need to keep surfaces tidy.



### Brushes to Suit Every Need

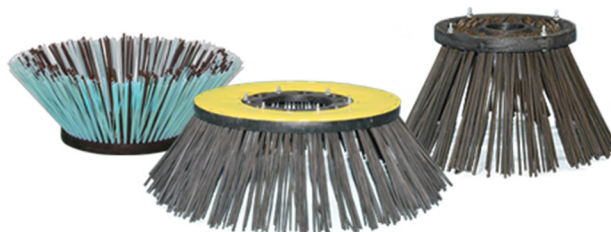
Versatile and hard wearing, Danline brushes are made to fit a huge range of road sweeping machines, such as:

- Johnston
- Hako
- Ravo
- Scarab
- Schmidt
- Mathieu
- Applied
- Schloring
- J A
- N C and more

### Wheel Brushes

Dedicated to meeting all our customers' needs, we can supply a variety of wheel brushes, including:

- Wide Faced
- Euro Brush
- Multi-Bore
- Taper-Bore



### Road Sweeping Machines

As well as offering brushes and parts for major sweepers, our staff can also provide road sweeping equipment. Tow-along or front attachment, we can advise you on the best sweeper for the job.



#### Garvagh

6-10 Killyvalley Road, Garvagh,  
Coleraine, BT51 5JZ

T : +44 (0) 28 2955 6230